

About the Advanced Placement Program[®] (AP[®])

The Advanced Placement Program[®] enables willing and academically prepared students to pursue college-level studies — with the opportunity to earn college credit, advanced placement, or both — while still in high school. AP Exams are given each year in May. Students who earn a qualifying score on an AP Exam are typically eligible to receive college credit and/or placement into advanced courses in college. Every aspect of AP course and exam development is the result of collaboration between AP teachers and college faculty. They work together to develop AP courses and exams, set scoring standards, and score the exams. College faculty review every AP teacher's course syllabus.

AP Calculus Program

AP Calculus AB and AP Calculus BC focus on students' understanding of calculus concepts and provide experience with methods and applications. Although computational competence is an important outcome, the main emphasis is on a multirepresentational approach to calculus, with concepts, results, and problems being expressed graphically, numerically, analytically, and verbally. The connections among these representations are important.

Teachers and students should regularly use technology to reinforce relationships among functions, to confirm written work, to implement experimentation, and to assist in interpreting results. Through the use of the unifying themes of calculus (e.g., derivatives, integrals, limits, approximation, and applications and modeling) the courses become cohesive rather than a collection of unrelated topics.

AP Calculus AB Course Overview

AP Calculus AB is roughly equivalent to a first semester college calculus course devoted to topics in differential and integral calculus. The AP course covers topics in these areas, including concepts and skills of limits, derivatives, definite integrals, and the Fundamental Theorem of Calculus. The course teaches students to approach calculus concepts and problems when they are represented graphically, numerically, analytically, and verbally, and to make connections amongst these representations.

Students learn how to use technology to help solve problems, experiment, interpret results, and support conclusions.

PREREQUISITE

Before studying calculus, all students should complete four years of secondary mathematics designed for college-bound students: courses in which they study algebra, geometry, trigonometry, analytic geometry, and elementary functions. These functions include linear, polynomial, rational, exponential, logarithmic, trigonometric, inverse trigonometric, and piecewise-defined functions. In particular, before studying calculus, students must be familiar with the properties of functions, the algebra of functions, and the graphs of functions. Students must also understand the language of functions (domain and range, odd and even, periodic, symmetry, zeros, intercepts, and so on) and know the values of the trigonometric functions at the numbers 0 , $\pi/6$, $\pi/4$, $\pi/3$, $\pi/2$, and their multiples.

Use of Graphing Calculators

Professional mathematics organizations have strongly endorsed the use of calculators in mathematics instruction and testing. The use of a graphing calculator in AP Calculus AB is considered an integral part of the course.

Goals of AP Calculus AB

Students who are enrolled in AP Calculus AB are expected to

- Work with functions represented in multiple ways: graphical, numerical, analytical, or verbal. They should understand the connections among these representations.
- Understand the meaning of the derivative in terms of a rate of change and local linear approximation and use derivatives to solve problems.
- Understand the meaning of the definite integral as a limit of Riemann sums and as the net accumulation of change and use integrals to solve problems.
- Understand the relationship between the derivative and the definite integral as expressed in both parts of the Fundamental Theorem of Calculus.
- Communicate mathematics and explain solutions to problems verbally and in writing.
- Model a written description of a physical situation with a function, a differential equation, or an integral.
- Use technology to solve problems, experiment, interpret results, and support conclusions.
- Determine the reasonableness of solutions, including sign, size, relative accuracy, and units of measurement.
- Develop an appreciation of calculus as a coherent body of knowledge and as a human accomplishment.

Topic Outline for AP Calculus AB

I. Functions, Graphs, and Limits

- Analysis of Graphs
- Limits of Functions (including one-sided limits)
- Asymptotic and Unbounded Behavior
- Continuity as a Property of Functions

II. Derivatives

- Concept of the Derivative
- Derivative at a Point
- Derivative as a Function
- Second Derivatives
- Applications and Computation of Derivatives

III. Integrals

- Interpretations and Properties of Definite Integrals
- Applications of Integrals
- Fundamental Theorem of Calculus
- Techniques and Applications of Antidifferentiation
- Numerical Approximations to Definite Integrals

AP Calculus AB Exam Structure

AP AB CALCULUS EXAM: 3 HOURS 15 MINUTES

Assessment Overview

The AP Calculus AB Exam questions measure students' understanding of the concepts of calculus, their ability to apply these concepts, and their ability to make connections among graphical, numerical, analytical, and verbal representations of mathematics. Adequate preparation for the exam also includes a strong foundation in algebra, geometry, trigonometry, and elementary functions, though the course necessarily focuses on differential and integral calculus. Students may not take both the Calculus AB and Calculus BC Exams within the same year.

The free-response section tests students' ability to solve problems using an extended chain of reasoning. During the second timed portion of the free-response section (Part B), students are permitted to continue work on problems in Part A, but they are not permitted to use a calculator during this time.

Format of Assessment

Section I: Multiple Choice | 45 Questions | 105 minutes | 50% of Exam Score

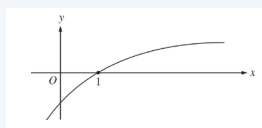
- **Part A:** 28 questions; 55 minutes (no calculator permitted)
- **Part B:** 17 questions; 50 minutes (graphing calculator permitted)

Section II: Free Response | 6 Questions | 90 minutes | 50% of Exam Score

- **Part A:** 2 problems; 30 minutes (graphing calculator permitted)
- **Part B:** 4 problems; 1 hour (no calculator permitted)

AP CALCULUS AB SAMPLE QUESTIONS

Sample Multiple-Choice Question



The graph of a twice-differentiable function f is shown in the figure above. Which of the following is true?

- (A) $f(1) < f'(1) < f''(1)$
- (B) $f(1) < f''(1) < f'(1)$
- (C) $f'(1) < f(1) < f''(1)$
- (D) $f''(1) < f(1) < f'(1)$
- (E) $f''(1) < f'(1) < f(1)$

Correct Answer: D

Sample Free-Response Question: Experimental Design

t (minutes)	0	1	2	3	4	5	6
$C(t)$ (ounces)	0	5.3	8.8	11.2	12.8	13.8	14.5

Hot water is dripping through a coffeemaker, filling a large cup with coffee. The amount of coffee in the cup at time t , $0 \leq t \leq 6$, is given by a differentiable function c , where t is measured in minutes. Selected values of $C(t)$, measured in ounces, are given in the table above.

- (a) Use the data in the table to approximate $C'(3.5)$. Show the computations that lead to your answer, and indicate units of measure.
- (b) Is there a time t , $2 \leq t \leq 4$, at which $c'(t) = 2$? Justify your answer.
- (c) Use a midpoint sum with three subintervals of equal length indicated by the data in the table to approximate the value of $\frac{1}{6} \int_0^6 C(t) dt$. Using correct units, explain the meaning of $\frac{1}{6} \int_0^6 C(t) dt$ in the context of the problem.
- (d) The amount of coffee in the cup, in ounces, is modeled by $B(t) = 16 - 16e^{-0.4t}$. Using this model, find the rate at which the amount of coffee in the cup is changing when $t = 5$.